

# THE NOVICE GUIDE VT24



# WELCOME!

**Dear Novice,**

First of all, I want to take this opportunity to congratulate you on being accepted into Lund University School of Economics and Management (LUSEM). The journey to Lund isn't easy, but all the hard work and late nights you have put in throughout the years have really paid off. Therefore, I also want to say good job to you! We at LundaEkonomerna want to welcome you with open arms to the greatest student town in the world and to one of Sweden's leading student unions.

LundaEkonomerna is here to help you, guide you and support you throughout your student life to make sure you get the most out of your student experience. Our main purpose is to ensure the quality of education for all students at LUSEM, which is possible thanks to our close collaboration with the school. To make sure you get the most out of your student experience outside of school we offer a huge range of activities in our three different legs - Education, Career and Social. Our members arrange everything from career fairs and sporting events to festivities and balls for hundreds of people. Engaging and taking part in the amazing student life in Lund and in LundaEkonomerna is something I really urge you to do during your time as a student. Regardless of what you are passionate about or interested in, there is always something for you in our union. Many join us with little to no past experience and leave as project leaders, event planners and marketers, having made friends and memories for a lifetime along the way.

Before your first day of school, you will get the chance to experience what LundaEkonomerna has to offer. The Novice Week kicks it all off on the 8<sup>th</sup> of January. The Novice Committee along with the "Faddrar" are ready to make sure that you get the best possible start here in Lund together with your new friends. Prepare for an extraordinary week with something to offer for everyone. I hope that you make the same decision as I did and participate in this amazing week that you will remember for a lifetime. You will not regret it! We are so excited to finally meet you and to welcome you to Lund and LundaEkonomerna. I wish you an amazing summer and once again a huge congratulation on getting accepted to LUSEM.

See you on the 8th of January!

Simon Anderberg  
President of LundaEkonomerna 2023/2024



[lundaekonomerna.se/novice](https://lundaekonomerna.se/novice)  
#BackToSkånis



@novicecommittee.le



LundaEkonomerna - Social



# What is the Novice Week?

We, the members of LundaEkonomernas Novice Committee, are inviting you to the Novice Week of Spring 2024! This year it will take place between the 8th and 12th of January and we hope that you are as excited as we are! As we all know, the past years have been different in many ways, providing challenges, but also opportunities. The Novice Committee has worked tirelessly to create fun, unforgettable and eventful experience for everyone involved. The Novice Week will fulfil its true potential and give you the best start of your student life in Lund.



We are thirteen members in the Novice Committee who have been working continuously during the semester to plan this event. Other experienced students will be your Fadders (mentors) during the week, and they are happy to answer any questions you may have and guide you through the full week!

During the Novice Week you will be introduced to lots of new friends, compete together with your Novice group and learn all about the true virtues of being a LundaEkonom. The Novice Week is custom-made for you, to make sure you will feel at home in what is the greatest student city in the world - Lund. There is no doubt that you will end the week feeling prepared for your future time as a student! So it's time to get excited for what we are sure will be the best week ever!

We look forward to seeing you on **Monday the 8th of January !**

**Heads  
up!**



**To participate** during the Novice Week VT24  
you need to **buy a ticket!**

Information regarding this can be found on page 11!



# The schedule of the Novice Week

## MONDAY 8/1

The Novice Week begins at 10:00 in Ljuskården at Tunavägen 37. You will be greeted by the school and the principal, as well as meet the Novice Committee, our main sponsors, your thrilled fadders and most importantly, your fellow novices! In your Novice Group, you will have the afternoon to get to know each other and challenge the other novice-groups in a lot of fun games, and start the competition for Best Novice Group of the week! In the evening, your fadders will arrange some fun pre-parties before going to the main party at a nation. The night will end with a legendary after party at LundaEkonomerna's beloved Student Union HQ, Skånis



## TUESDAY 9/1

Tuesday is the city day, on this day you will get to meet your fellow novices, fadders, committee members from lundaekonomerna and explore Lund as a city. Throughout challenges and competitions you will get to compete with other fadder groups and challenge your knowledge of our beloved city. The evening will end with a party at one of the nations where you will meet all the novices, fadders and committee members. The evening will then end with an afterparty at Skånis.

## WEDNESDAY 10/1

This day is for you to rest a bit and recover from the long days - it is time for you to chill! We will spend the day, all novice groups together, watching movies, do yoga, eating some snacks and drinking soda. We expect you to be in your most chilled mood during the day, so that you are fully prepared to bring all your energy and "tagg" for the upcoming days!





# The schedule of the Novice Week

## THURSDAY 11/1

The Big Playday! This is a day filled with challenges, games and dances. You'll also get the chance to show the other groups who's the BOSS of inflatables! Bring a super-psyched eager to win, both the games but most importantly: the cheer points! Make sure to be in a competitive spirit, warmed up and excited! We look forward seeing you and your group compete against the others, it is surely a day you will remember!

## FRIDAY 12/1

After a long week of competing, Friday will consist of: more competing. This year Friday will be The PIGGY game, where you, together with your novice group, will compete against other groups. You will compete for the last points of the week in some bonding activities, focusing on cooperation and being the smartest group, after that you will have some time to prepare for the final party in the evening.



# Bike party

**One of the first events of the semester,  
arranged by the Social Committee**

**DATE WILL SOON BE ANNOUNCED!**

Dear Novices,

We from the social committee welcome you to Lund and to our wonderful union - Lundaekonomerna. Our committee is a part of the yellow leg and arranges several social events for all members during each semester. We host finsittningar, fulsittningar, bike parties and our beloved Tandem race during the spring semester!

You will sign up in groups of three people. Together with your group, you will host one course and also bike to two other locations to enjoy either a starter, main course, or dessert. At each location, you and your group will meet up and eat with two other groups – meaning that you and your group will get to know six new people at every location! There are usually a bit over 200 people participating in our Bike Parties, and you of course get to see everyone at the after party at one of Lund's nations.



**Ida Bratthall**

Social Committee

See you soon & do not forget to follow us on  
Instagram [@socialcommittee.le](https://www.instagram.com/socialcommittee.le)  
[#besocialwithsocial](https://www.instagram.com/socialcommittee.le)

With love,  
the Social Committee







# THE NOVICE PARTY

*Save the Date*

2/2



# The Novice's dictionary

## Novice

– All new members of LundaEkonomerna are called Novices

## Fadder

(or mentor) – The heroes who before, during and after the Novice week will take care of you and your fellow novices. Their task is to make sure you have an unforgettable week and start of your new life as a LundaEkonom.

## Skånis

– The headquarter of the student union LundaEkonomerna. This is where Lunds and maybe even Sweden's best after parties takes place during the Novice week. During school hours it is a perfect place to study or to just hang around. Everyone is welcome!

## @novicecommittee.le

– Is probably the world's greatest Instagram account where you can keep up with the Novice Committee and our preparations before the week. We will of course keep the account updated during the whole week. Follow us!

## Academic quarter

– Back in the old days, when people didn't own a personal watch, you knew that when the church clock rang, you had a quarter to get to lecture. This tradition remains today as lectures often begins a quarter after stated time.

## Double quarter

– after 6PM the lectures start 30 minutes after stated time. Originally this was due to give the men a chance the get home and change for a jacket before the evening.

## Prickprick

(..) - means "sharp sharp". If you see these words behind a stroke of a certain time, it means that it is important that you are no later than the given time.

## Sittning

is an expression we are guessing you are familiar with, a common event run by both student nations as well as student unions, such as LundaEkonomerna. This may be one of the most well-known and exciting activities you ever experience during your student life. There are two different kinds of sittings:

Firstly, we have the more elegant version called **Finsittning** where you are expected to suit up and enjoy a traditional three course meal, tons of speeches and dinner entertainment. Secondly, **Fulsittning** a simpler concept usually including a theme. Both are awesome dinner parties, followed by wild afterparties.

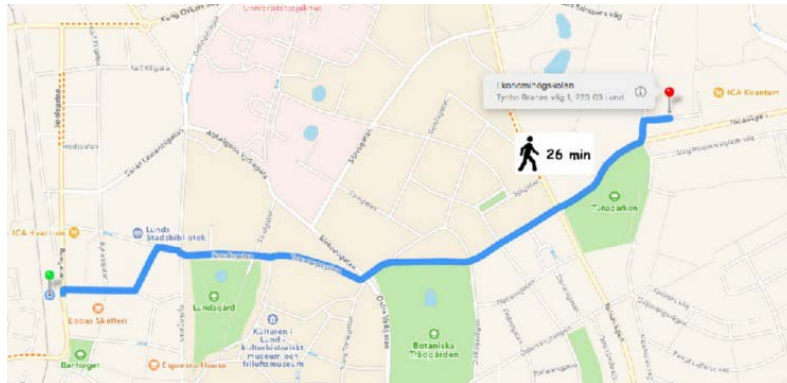




# Find your way

## The School

From the Central Station to the School of Economics and Management The easiest way to get to EC (Economics Center) is to go by bus from the Central Station. Take bus no. 1 or no. 6 from bus stop K and exit the bus at “Lund Warholms väg” across the street from the School of Economics and Management. There you will find the main entrance to EC1 and Ljusgården. Take a look at [www.skanetrafiken.se](http://www.skanetrafiken.se) or download their app!



## AF-Borgen

During your time as a LundaEkonom there will be many events hosted at AF-Borgen. The LE Party on 2nd of February will be the first! Therefore it might be a good idea for you to find your way there. You can find AF-Borgen about 750 metres from the central station in a park called Lundagård.

## LundaEkonomerna's headquarter "Skånis"

Skånis is the small yellow building placed on the courtyard surrounded by EC1, -2 and -3. The easiest way to Skånis is to go through main entrance of EC1, pass the reception and in to the cafeteria of EC3. The courtyard will now be placed on your left hand side with Skånis being the only building there. Don't worry, once you're there you can't miss it!

## LundaEkonomerna - your student union!

The main purpose of LundaEkonomerna is to monitor the quality of the education at Lund University School of Economics and Management, but as a student you're offered so much more. There are 26 committees, all with different purposes and orientations, where you as a student have the possibility to be engaged in. The student union has three legs; Career, Social and Education – there is something for everyone! For example, you can help out during social activities, encourage entrepreneurship, women enterprise or why not arrange sport events? We even have a band!



# How to sign up

## Step 1

The first step is to register and pay the fee for Studentlund. You can see more detailed instructions on the next page.

## Step 2 - Download the app "Orbi"

1. Download our app from the your mobile app store – search for "Orbi" and then register for the school where you study.
2. Create an account
3. Select the novice week ticket and pay the fee
4. Get hyped!

Do you need help with the registration, contact Project Leader Karl Enocsson, contact info below. For further instructions on how to sign up for Studentlund, please see the next page!



Karl Enocsson  
Project Leader  
Novice  
Committee

+46 703 01 03 26

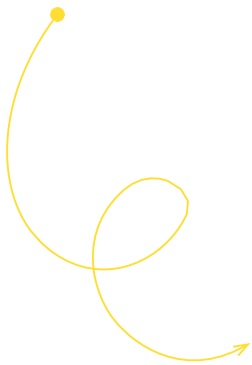
[novischeriet@lundaekonomerna.se](mailto:novischeriet@lundaekonomerna.se)





# Studentlund - Important

1. Enter [www.studentlund.se](http://www.studentlund.se) and register with your social security number and your application code (LU-XXXXX). You will automatically become a member of LundaEkonomerna since you study at the School of Economics and Management. If you have studied at the University of Lund before and have been a member of a different student union, please get in touch before you complete the payment.
2. Pay for the membership. If you pay with bank giro service, the payment will take around three business days. If you pay by card online the transaction will happen instantly. The payment must be completed before the Novice Week begins!
3. It's important that you save the receipt in digital form. You will find the receipt by logging in to [Studentlund.se](http://Studentlund.se) and enter "my membership". To take part of all activities during the week you will have to show this receipt.
4. Download the app "Studentkortet" and register. There you will find your digital student card.
5. When you are ready to decide what nation you would like to be part of, you go there and sign up. This can be done before, during or after the Novice Week



## REMEMBER

The payment receipt is required to be able to enter the Nationer (clubs) during the nights of the Novice Week. Observe that you need to have this receipt in printed paper form and that you will need to present an ID along with it.



# The Union

In the Union LundaEkonomerna there are four different legs to that holds over 26 different committees to be engaged within!

There is something for everyone!

Check at all out at: <https://www.lundaekonomerna.se/committees/>

Some examples from

## SOCIAL LEG

Creating a social context and belonging for all



Some examples from

## EDUCATION LEG

Focuses on your education and learning



Some examples from

## CAREER LEG

Connecting students with their dream employers



Some examples from

## GENERAL LEG

Vital functions for the organisation





# Follow us!



LundaEkonomerna  
LundaEkonomerna - Career  
LundaEkonomerna - Social  
LundaEkonomerna - Education



@LundaEkonomerna  
@novicecommittee.le

[www.lundaekonomerna.se](http://www.lundaekonomerna.se)



# A checklist for a LundaEkonom

- ✓ **Become a member of Studentlund and LundaEkonomerna**
- ✓ **Register on Ladok**
- ✓ **Get your LU card at Studentcentrum**
- ✓ **Buy yourself a bike -pro tip check the police auctions!**
- ✓ **Get your own homeinsurance**
- ✓ **Visit a nation and find your best fit**
- ✓ **Follow LundaEkonomerna for updates**
- ✓ **Get a salad at Grönt & Gott and start collecting those stamps**
- ✓ **Make sure to food prep that matlåda**
- ✓ **Join a Facebook group for buying and selling litterature**
- ✓ **Do not procrastinate even if it's so fun**
- ✓ **Do not forget, you are here to *~study~***





# Need help?

## 3/1 - 7/1

We will be hosting an "open house" at Skånis at Wednesday 3/1 and Sunday 7/1 between 10-14. Please do not hesitate to come by if you have any questions regarding the week, Studentlund or would like to print your payment receipt. On this page you will find contact information to members who can help you if you have any questions or worries regarding the Novice Week.



**Karl Enocsson**

Project Leader  
Novice Committee

+46 703 01 03 26

[novischeriet@lundaekonomerna.se](mailto:novischeriet@lundaekonomerna.se)

Contact with questions regarding  
the Novice Week



**Lisa Holm**

Communications Manager  
The Board

+46 723 22 00 77

[communications@lundaekonomerna.se](mailto:communications@lundaekonomerna.se)

Contact with questions regarding  
Membership



**Simon Anderberg**

President  
The Board

+46 723 22 00 33

[president@lundaekonomerna.se](mailto:president@lundaekonomerna.se)

Contact with general questions  
about the union



**Ida Bratthall**

Social Committee

[su@lundaekonomerna.se](mailto:su@lundaekonomerna.se)

Contact with questions regarding  
the Bike Party



**Fanny Karlander**

Treasurer  
The Board

+46 723 22 00 55

[treasurer@lundaekonomerna.se](mailto:treasurer@lundaekonomerna.se)

Contact with questions regarding  
payment



# Thank you to our main partner!



## and to our partners

