

HI!
SPRING 2024



WELCOME

LundaEkonomerna (LE) Student Union is an organization driven by students. We are the home for all students at Lund University School of Economics and Management (LUSEM), and our job is to ensure that you get the most out of your student life in Lund. Our 300 Active Members work together to improve the education at LUSEM, the future careers of our Members, and last but not least the social life of students.

We do this by arranging many fun and educational events, opening up educational and career opportunities for Members at all levels of their education. Our 26 Committees produce about 100 events per year, and our committees are categorized into four legs: Education, Social, Career, and General. We take much pride in being able to offer something for everyone who wants to partake in activities in parallel to their studies.

This brochure will hopefully give you an insight to what LundaEkonomerna has to offer. To keep up, make sure to visit www.lundaekonomerna.se and follow us on our social medias.

If you have any questions or ideas, you can always contact us through email, call us or drop by Skånis for a chat. Contact information is available in the end.



SKÅNIS

Skånis, the yellow house located on the courtyard of LUSEM, is the home and heart of LundaEkonomerna. It's a gathering place for all LundaEkonomer, so all of you are welcome! The Board also works from Skånis.

At Skånis you can heat up your lunch, hang out with other students inside or out on the sun-deck and ask questions about your membership, upcoming events, or whichever union or non union related questions!

Opening Hours:

Weekdays 9am to 5pm

Office Hours:

Weekdays 10am to 12pm

Members

All students at LUSEM are welcome to become Members of LundaEkonomerna. The active members, collegium, and Board, work to maximize your student life, and thus, you impact what we do. Moreover, the members are the ones electing our General Council.

General Council

A group of 21 representatives - members who get elected by other members. They are the ones who appoint our positions of trust (for example the Collegial members and The Board).

Active Members

Active Members are those working in the Committees. You can be everything from a Marketing to Sports Coordinator. Most of the recruitment takes place in the beginning and end of each semester.

The Board

This is the highest operating body of LundaEkonomerna. It's the Boards' task to make sure that all operations run smoothly. The 10 Board members have different areas of the Union's work as their main focus, and together they make up a management team as well as a Board.

Collegial Members

The Collegial Members are the Project Leaders of LundaEkonomerna's Committees and Projects. Along with being individual leader, they also make up the Collegium - A collaboration working long-term towards our strategy.

STUDENTLUND

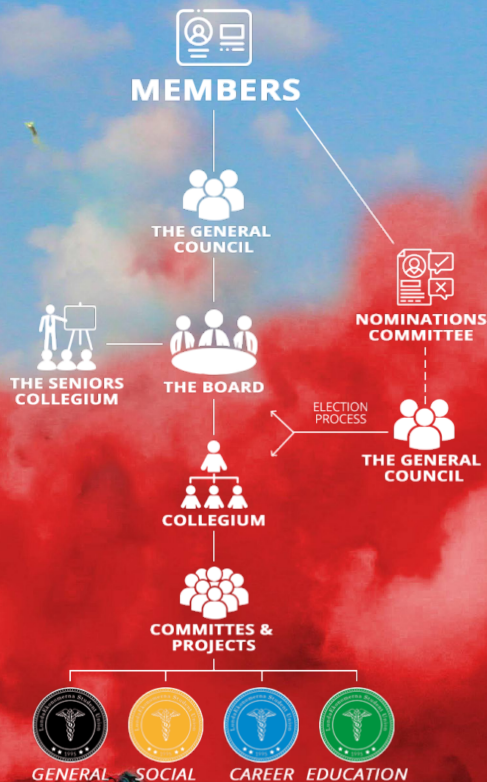
Want to become a Member of LundaEkonomerna? Join Studentlund!

Studentlund is the whole student life gathered in one membership. Becoming a Member unlocks an unmatched social community.

How?

1. Register at www.studentlund.se
2. Pay the semester fee
3. Sign up at a Nation

As a student at LUSEM, you will automatically become a Member of LundaEkonomerna when joining Studentlund. You need to be a Member of LundaEkonomerna through Studentlund to attend our events.



OUR ORGANISATION

BEING ACTIVE

The entire student life is based on voluntary efforts. But why work for free? Not only can you attend awesome activities as thank you events, you will also meet many new people and get to actualize your ideas. This is an opportunity for you to try new things and to develop and grow. We have about 300 spots open each year.

Being an Active Member as a part of one of LundaEkonomerna's 26 Committees and projects is also a chance for you to take on responsibilities that otherwise may only be available after several years in the working life. If you want your time in Lund to involve more than just studying, then becoming an Active Member in LundaEkonomerna is perfect for you. Whether your passion lies within career, education or social events, LundaEkonomerna has something for everyone.

As a Project Leader for one of our 26 Committees, you also become a Collegial Member. This means that you, above being responsible for you Committee also have a position of trust. Every month there is a collegial meeting where about two dozen collegial members meet to discuss important matters within the Union and to get vital information. You will also be invited to a lot of different activities such as leadership workshops, teambuilding's, social gatherings, and a kick-off each semester.

Find more information about the positions on www.lundaekonomerna.se/get-involved/



HOW?

Check www.lundaekonomerna.se/get-involved continuously during the semesters to find available positions.

STEP 1 *Send in your application*

STEP 2 *Go to an interview*

Further, only for Positions of trust, e.g. Collegial Member

STEP 3 *Hold a speech and answer questions from General Council*

26 COMMITTEES



ENDLESS OPPORTUNITIES





Corporate Challenge

Corporate Challenge (CC) is a unique career fair in the Autumn, where students have the opportunity to compete with company representatives in challenging and fun activities, such as bubblefootball and segway.

www.lundaekonomerna.se/corporate-challenge



The Corporate Relations Committee

CRC is arranging a wide variety of events. This includes everything from lunch lectures, corporate evenings to the Breakfast Club, which is inspirational lectures with free breakfast.

www.lundaekonomerna.se/crc



The eeeDays

The eee-days is the largest career fair in the Nordics for business, economics & IT students. The whole school gets transformed during two days to a fair with 4000 job-hungry students and 75 companies & organizations.

www.eee.lundaekonomerna.se



Lund European Business Tour

Lund European Business Tour (LEBT) gives a group of lucky students the chance to travel around Europe and visit major international companies and to lay the foundation for an international career.

www.lundaekonomerna.se/lebt



Lund Economics Stockholm Tour

Lund Economics Stockholm Tour (LEST) is a trip focusing on economics students going to Stockholm. The students get to visit and establish contacts in relevant organizations, agencies, companies and ministries (*currently paused*).

www.lundaekonomerna.se/lest



Samday

Samday is a career day with focus on systems science and IT. Our informatics students get to interact with companies on either a business related topic or a more laidback approach during one day together!

www.lundaekonomerna.se/samday



WILMA

WILMA is a mentor program between students and female mentors from the corporate world. Through interactive activities, inspirational lectures and networking evenings they strive to create valuable interactions.

www.lundaekonomerna.se/wilma



LE Case and Consulting Club

LE Case and Consulting Club is a new project for the fall of 2022, which is a merger of two previous committees Future of Case and LE Consulting Club. LECCC will host case solving events and consulting workshops.

<https://www.lundaekonomerna.se/le-case-and-consulting-club>



The Education Committee

The Education Committee work with surveillance of the education, by ensuring an ongoing dialogue between students and LUSEM. The yearly Speak Up Days let's the students makes their voice heard.

www.lundaekonomerna.se/education-committee



LE Sustainability

LE Sustainability aim to ensure LundaEkonomerna's contribution to a more sustainable society. They educate our members in the Sustainable Development goals of the UN Agenda 2030 and promote LundaEkonomerna's overall work with social and environmental sustainability.

www.lundaekonomerna.se/le-sustainability/



The Marketing Group

The Marketing Group work daily with the brand of LundaEkonomerna, both strategically and by supporting the Committees with graphic design, photography and communication.

www.lundaekonomerna.se/marketing-group



The Treasury

As the right hand of the Treasurer, the Committees main task is to support the Treasurer in tasks related to the financial situation of the Union. For example through keeping up with the daily bookkeeping.

www.lundaekonomerna.se/treasury



The Nominations Committee

The task of the Nominations Committee is to manage the recruitment processes of Positions of Trust (Collegial, Board and Nominations Committee positions) within LundaEkonomerna.

www.lundaekonomerna.se/nominations-committee



Quartermasters

The Quartermasters are responsible for the upkeep of our beloved Skånis. They are also responsible for the IT of the Union. Their aim is to let Committees work more smoothly.

www.lundaekonomerna.se/quartermaster



LE Band

LE Band is the official band of LundaEkonomerna. No matter if it is a ball, party or a corporate mingle, they are ready to be there and take the event to the next level.

www.lundaekonomerna.se/le-band



Carnival X

Every fourth year the big Carnival in Lund is arranged. Carnival X is LundaEkonomernas own version of this project, responsible for arranging sittningar and other fun activities for the students to get in the right spirit. www.lundaekonomerna.se/carnival-x



LE Choir

LE Choir was initiated by a group of people who loved to sing. LE Choir has a mission to spread joy by singing and performing at all types of different events within LundaEkonomerna.

www.lundaekonomerna.se/le-choir



International Committee

The purpose of LIW is to support intercultural relations. You can go to one of the 25+ different weeks organised all over the world. In the same way a group of students visit Lund International Week during spring.

www.lundaekonomerna.se/international-committee



The Master Committee

The Master Committee provide master's students at LUSEM with social events and help the master students get integrated in the culture of Lund. They arrange after schools, sittningar and the Graduation Gala.

www.lundaekonomerna.se/master-committe



The Novice Committee

The Novice Committee is responsible for organizing the biggest Novice Week in Lund, where new LundaEkonomer can meet with their classmates and dive into the student life in Lund!

www.lundaekonomerna.se/novice



Nådiga Lundtan

Nådiga Lundtan is our online student union magazine. The content ranges from education-related material to interviews with committees and insights into global trade and industry.

www.lundaekonomerna.se/nadiga-lundtan



Sexmästeriet

Sexet helps the committees arrange their events with catering, serving, and bartending. Sexet involves a lot of members as staffers - a great way of getting involved in the union and have a lot of fun!

www.lundaekonomerna.se/sexmasteriet



The Social Committee

The Social Committee is devoted to making the social life for our members more fun and rewarding. To achieve this they create various events throughout the year.

www.lundaekonomerna.se/social-committee



LE Sports

LE Sports is all about enhancing the students at LUSEMS university experience. Making it richer by offering sport activities where people can meet and socialise with other students outside of school.

www.lundaekonomerna.se/le-sports



The Vieri Project

The Vieri Project is responsible for all the internal events in LundaEkonomerna. Their most important mission is to thank the Active Members for all the time and effort they put in their work for the Union.

www.lundaekonomerna.se/vieriet

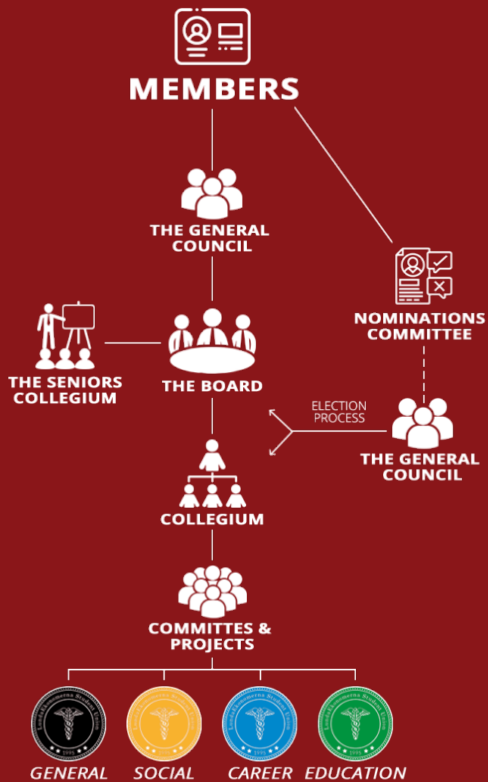


Vinterbalen

Vinterbalen is LundaEkonomernas annual ball which is one of the biggest celebrations in Lund and LundaEkonomernas largest social event. They can guarantee you entertainment of the highest class.

www.lundaekonomerna.se/vinterbalen

OUR ORGANISATION



WE CARE

This project exists to ensure that all student at LUSEM feel that their student union is there for them and that they can talk to us if something has happened.

#WeCare is LundaEkonomerna's profile for development when it comes to well-being and safety of the students. This initiative aims to act supportive in both studies and personal life, and communicate issues to the school from members of LundaEkonomerna.

We want to ensure that all students feel welcome, appreciated, and good about themselves, and above all, that students know that help exists and that we are here to guide you.



**SPEAK UP
DAYS!**

Speak up - Be a game changer!

DOKTORSAVHANDLINGAR
PHD THESES



SPEAK UP

We listen to our Members, if something is not right - notify us.

School related matters are handled by the Education Committee, or by the Educational Affairs Manager and the Vice President.

The Union related matters are handled by the Board of LundaEkonomerna. The Board is chosen by the members.

The Whistleblower function is a means for you as a Member notify us about things that may pass by unnoticed. These are later handled by the Board.

Report an issue at
www.lundaekonomerna.se/student-issues

ENVIRONMENT

LundaEkonomerna continuously works towards becoming a as environmentally conscious Student Union as possible. Therefore, in 2019 our organization signed the so-called "Klimatuppropet", or Climate Call, at Lund University. It is a petition aimed to demand the faculties at the universities to reduce their emissions with 50% within four years in order to reach the goal of the Paris Agreement.

As a student union with good relations with the faculty, it is therefore important that we also follow this. By the Spring of 2020 we established an Environmental Policy that will aid us in achieving this goal. Read more about the policy on our website. Moreover, some of the things we actively work towards are:

Vegetarian menu at all our events, **less use of disposables**, **no flights**, and **recycling** at all our events.

If you have any tips on how we can develop our organization with our work with sustainability, we encourage you to please contact info@lundaekonomerna.se

CONTACT

It's not always easy to know who to contact for specific questions or matters. Here you'll find the most usual subjects and who to contact for them. You can always find the email of the person holding a position at www.lundaekonomerna.se.

Question regarding your Membership?

Question regarding being Active?

Question regarding educational matters?

Question regarding an event?

Question regarding a specific recruitment?

Question regarding a Collegial Postion?

Contact the *Communications Manager*

Contact the *Internal Relations Manager*

Contact the *Education Committee*

Contact the responsible Committee

Contact the responsible Committee

Contact the *Nominations Committee*



+4672 322 00 77



info@lundaekonomerna.se



Skånelången, Tunavägen 37, 22363



www.lundaekonomerna.se



LundaEkonomerna



/LundaEkonomerna



/LundaEkonomernaCareer



/LundaEkonomernaEducation



/LundaEkonomernaSocial

THE BOARD

Simon Anderberg - President



+4672 322 00 33



president@lundaekonomerna.se

Saga Mossberg - Vice President



v.president@lundaekonomerna.se



Fanny Pettersson Karlander -Treasurer



+4672 322 00 55



treasurer@lundaekonomerna.se

Johannes Andersson - Internal Relations Manager



+4672 322 00 41



int.rel@lundaekonomerna.se

Josefine Arvidsson - Corporate Relations Manager



+4672 322 00 66



corp.rel@lundaekonomerna.se

Lisa Holm - Communications Manager



+4672 322 00 77



communications@lundaekonomerna.se

Albin Wahlgren - Corporate Sales Manager



corp.rel@lundaekonomerna.se

Ebba Eneqvist - Social Affairs Manager



social@lundaekonomerna.se

Emma Roggero - International Affairs Manager



international@lundaekonomerna.se



Hugo Gemzell - Educational Affairs Manager



edu.affairs@lundaekonomerna.se



VOCABULARY

LUSEM / EHL: Lund University School of Economics and Management, or Ekonomihögskolan in Swedish.

Student Union: An organisation working with monitoring the quality of the education. They often offer career activities and social activities in addition to the educational surveillance.

Nation: A student organisation offering social activities; pubs, food, clubs, housing, sports etc. In Lund there's thirteen of them. As a member of Studentlund you also get to choose which Nation to join.

Akademiska Föreningen (AF): A student organisation in Lund offering cultural activities such as spex, radio and debate. AF provides housing through AF Bostäder as well. As a member of Studentlund, you are a member of AF.

Academic Quarter / Akademisk Kvart: An old tradition from Lund, meaning that unless otherwise stated, the happening starts fifteen minutes after the appointed time. That's why lecturers come fifteen minutes "late"

Double Quarter / Dubbelkvart: Academic quarter but double up, meaning half an hour. This applies week-days after 6pm and weekends all day.

Prickpick / (..): Rules out the academic quarter / double quarter, it means that the happening starts at exactly the given time.

Novice / Novisch: A new student that has just started his or her programme or course.

Sittning: A dinner party, often with a three course menu, toastmasters and songs.

White Tie / Högtidsdräkt m.a.o: The most usual dress code at the balls, meaning tail coat suit for men and long evening dress for women with academic order medals.

AF Borgen: The gigantic castle in Lundagård. It's the student's building where you can study, eat, go to cultural activities as well as all big dinners and parties.

MAIN PARTNER



PARTNERS





LundaEkonomerna

LUSEM Student Union

Read more at www.lundaekonomerna.se